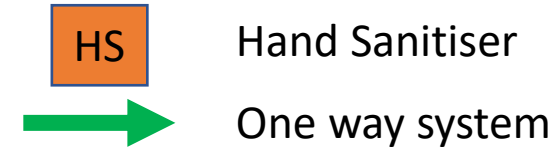
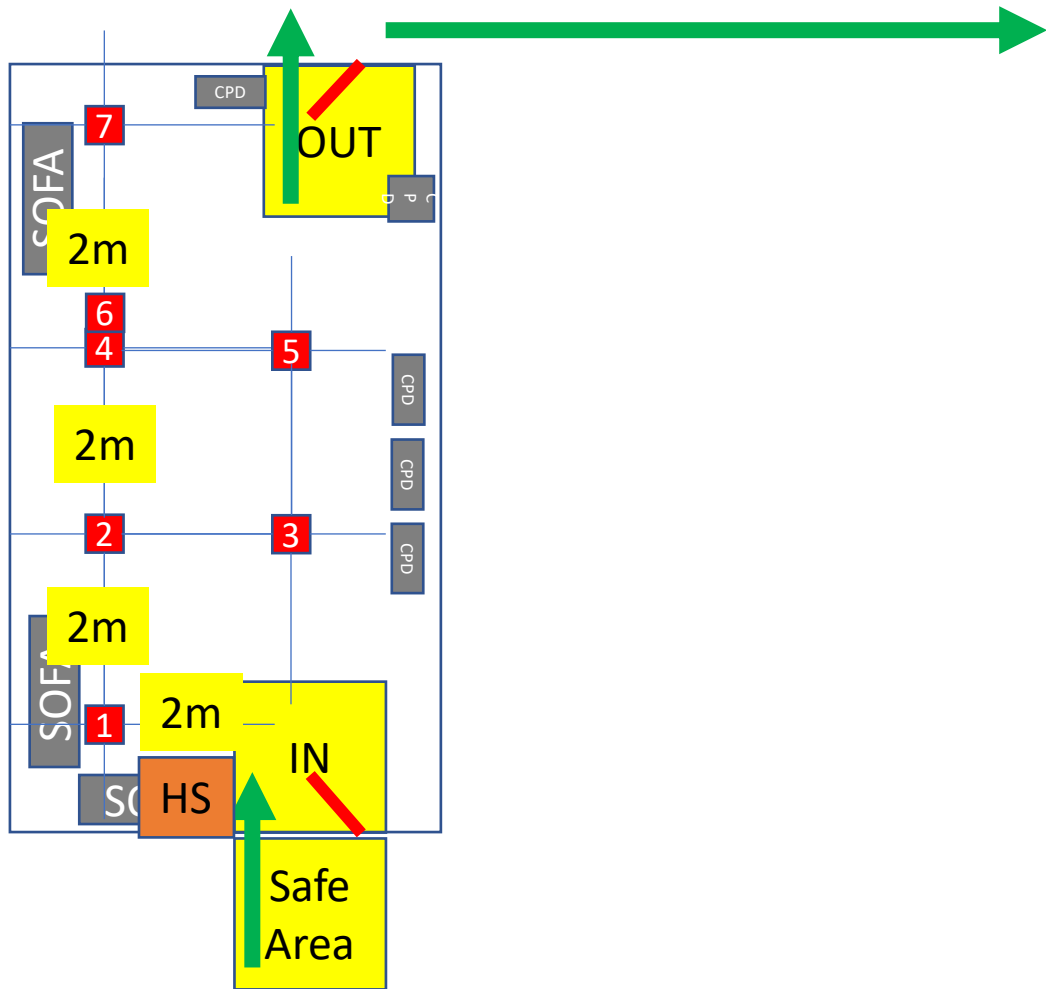


- Door to corridor should be open at all times.
- Doors should be open to aid air flow through the room.
- Avoid congregating at the entrance to allow access.
- One way route, exit is through the hall fire doors.
 - Lock entrance door on way out when finished.
- Sanitise all touch points before leaving,
 - Door handles, surfaces, light switches, etc.

Main Church

Max Capacity = 24 persons (21 Seated [9 double for bubble], 1 pulpit, 1 piano, 1 sound tech from Kitchen area)

Room is 9.7m wide by 10.07m long

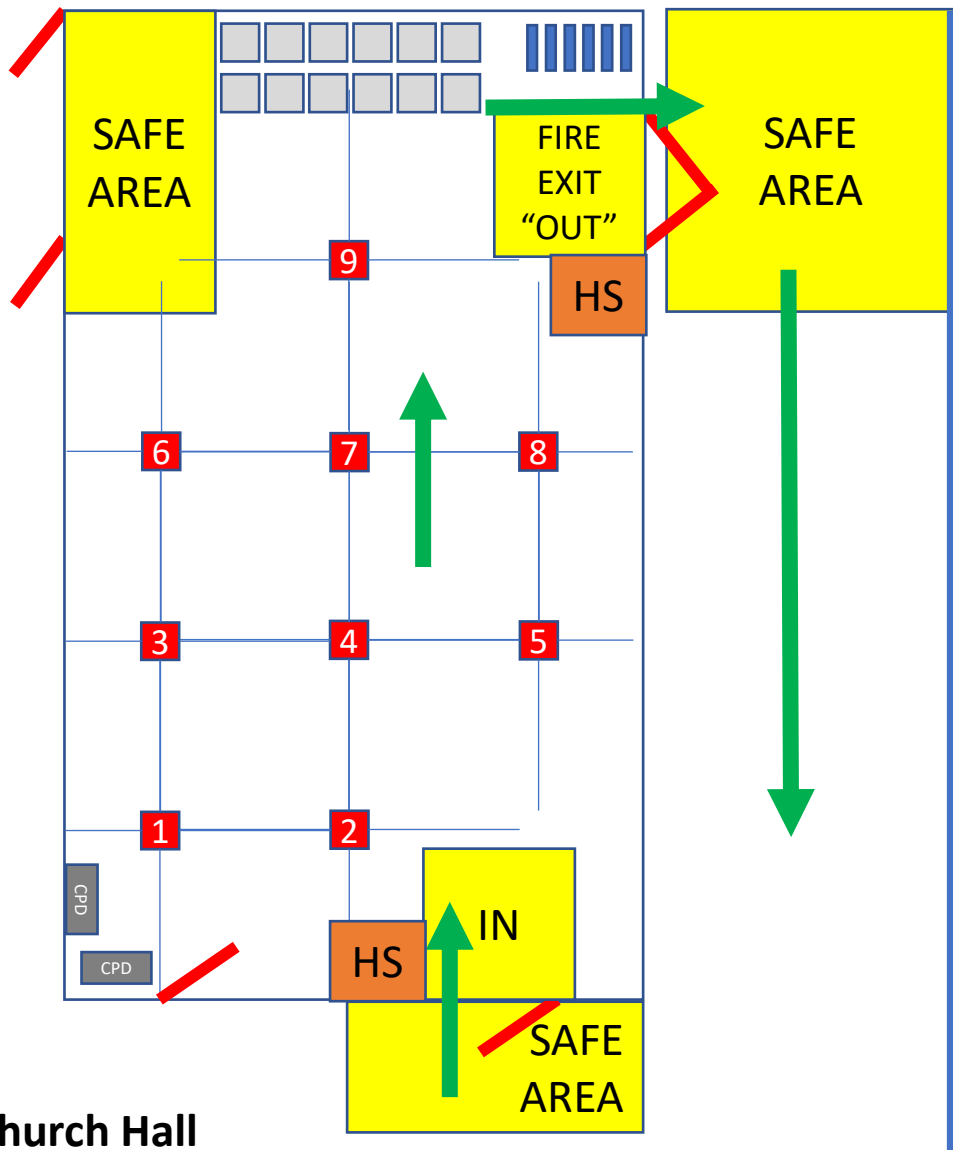


- Door to corridor should be open when room in use
- Avoid congregating at the entrance to allow access.
- One way route, exit is through the hall and fire doors.
 - Lock doors on way out when finished.
- Sanitise all touch points before leaving,
 - Door handles, surfaces, light switches, etc.

Church Lounge

Max Capacity = 7 seated or spaced for groups, double is for bubble

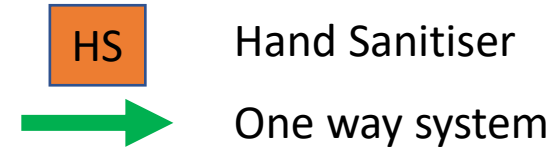
Room is 5.7m wide by 10.16m long



Church Hall

Max Capacity = 9 seated or spaced for groups

Room is 7.6m wide by 13.08m long



- Door to corridor should be open at all times.
- Doors should be open to aid air flow through the room.
- Avoid congregating at the entrance to allow access.
- One way route, exit is through the hall fire doors.
 - Lock entrance door on way out when finished.
- Sanitise all touch points before leaving,
 - Door handles, surfaces, light switches, etc.